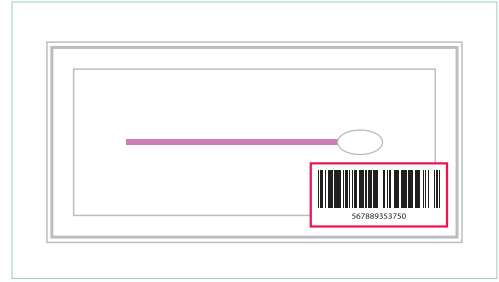




STEP 1

Download App

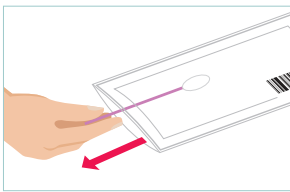


Please download our app and scan the barcode sticker in the package.

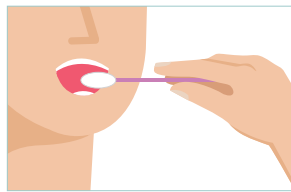
STEP 2

Collect Sample

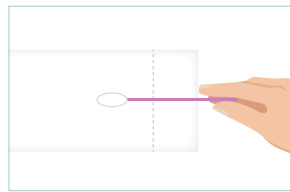
Do not eat, drink, smoke, chew gum or brush your teeth 1 hour before collecting your sample.
For better results, rinse your mouth with water prior the sample collection.



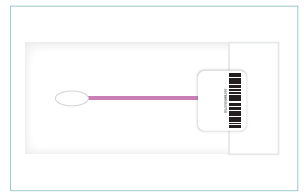
Remove the swab from the wrapper. Taking care not to touch the white swab head.



Rub the swab against your cheek for 1 minute.



Place the swab head first into the RapiDri pouch so that the head sits within the drying area.



Fold the RapiDri Pouch at the Fold Line, with the clear side inwards as shown, and use the barcoded sticker to seal.

STEP 3

Send Sample



Place the sample within the RapiDri pouch into the small plastic bag and seal the bag.



Please use the return mail envelope to return your sample to the laboratory. Postage is included.